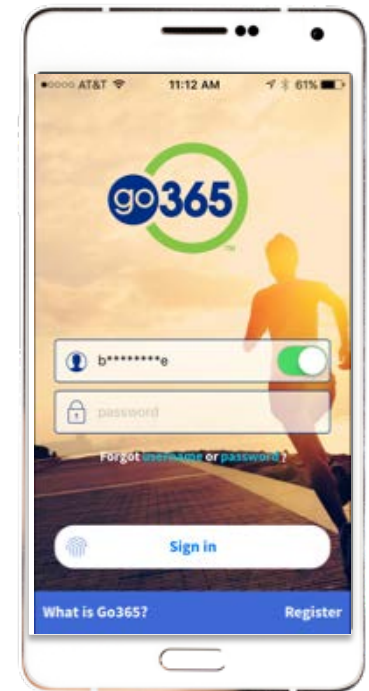
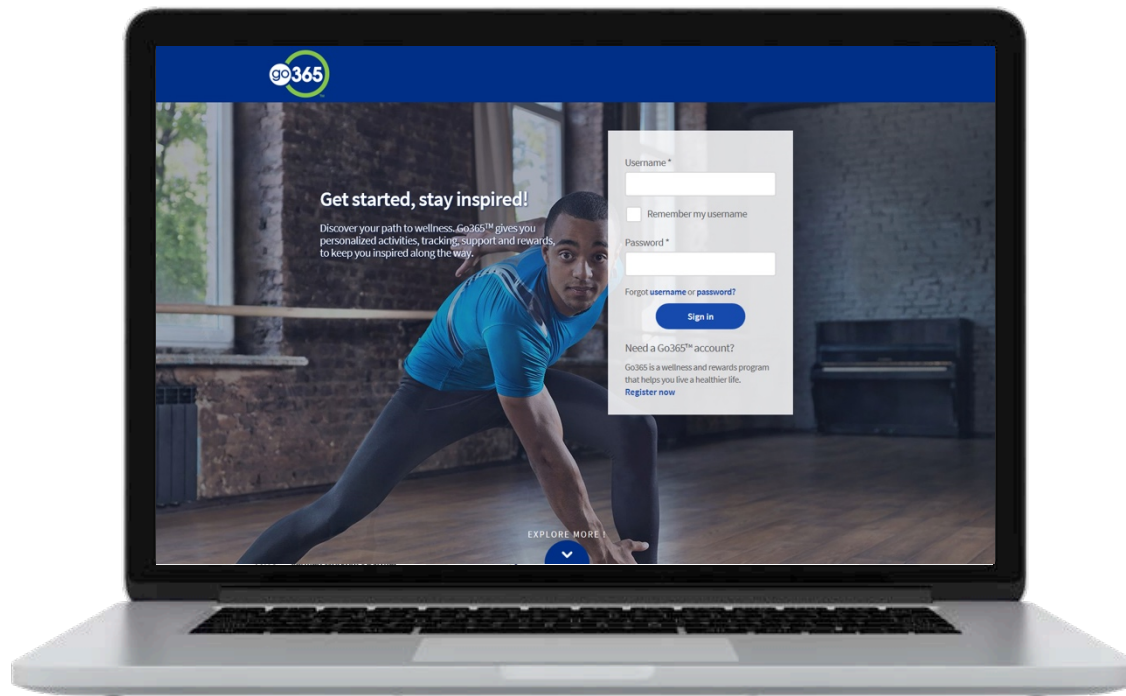


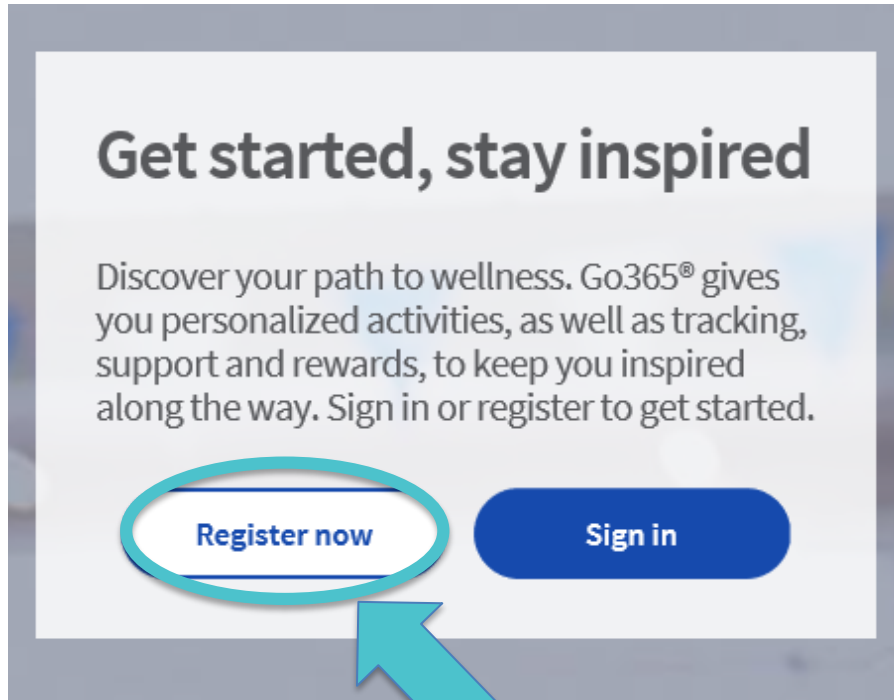
Two Ways to Register for Go365®

1. [Go365.com](https://www.go365.com)*
2. Go365 App (available in the Apple and Google Play Stores)

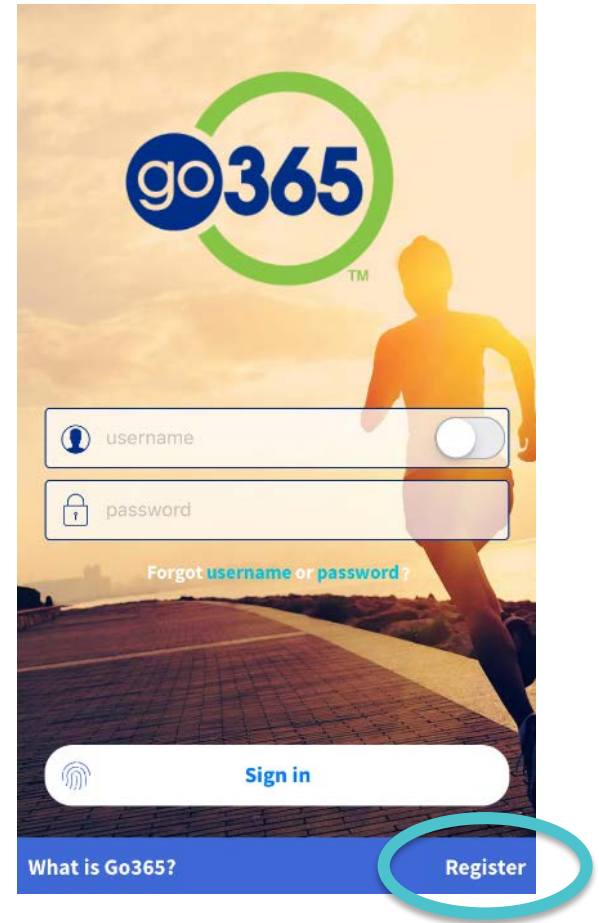


Select the Register button on Go365.com or in the App

Go365.com



Go365 App



Complete your member identifying information then select the “Continue” button

Registration

Member information

Enter your identifying information to access Go365®, where you can find the tools and support to help you live a healthier life.

If you are a Humana member, please register for Go365 and MyHumana at [Humana.com](https://www.humana.com).

*** Required**

Member ID number ?

or

Social Security number ?

Date of birth *

ZIP code *

Continue

By continuing, I agree to the [Go365 Online Services and Go365 Web Confidentiality Agreement](#)

- Your member ID number is a 9-digit number
- Enter your date of birth with all eight digits (i.e. 10/01/1985)
- Zip code must match the zip code currently on file with Go365. If you recently moved and your zip code isn't being accepted, try using your old one.

Create a Username and Password

Registration

Username and password

All fields are required

Email address

Confirm email address

Create username

6 to 15 letters and/or numbers, no spaces or special characters, and not your member ID

Password

Confirm password

- Password is case sensitive
- Must be a minimum of 8 to 15 characters
- Must have at least 1 number and 1 letter
- No spaces or special characters other than # * \$ or @
- Username and password cannot be the same

Submit

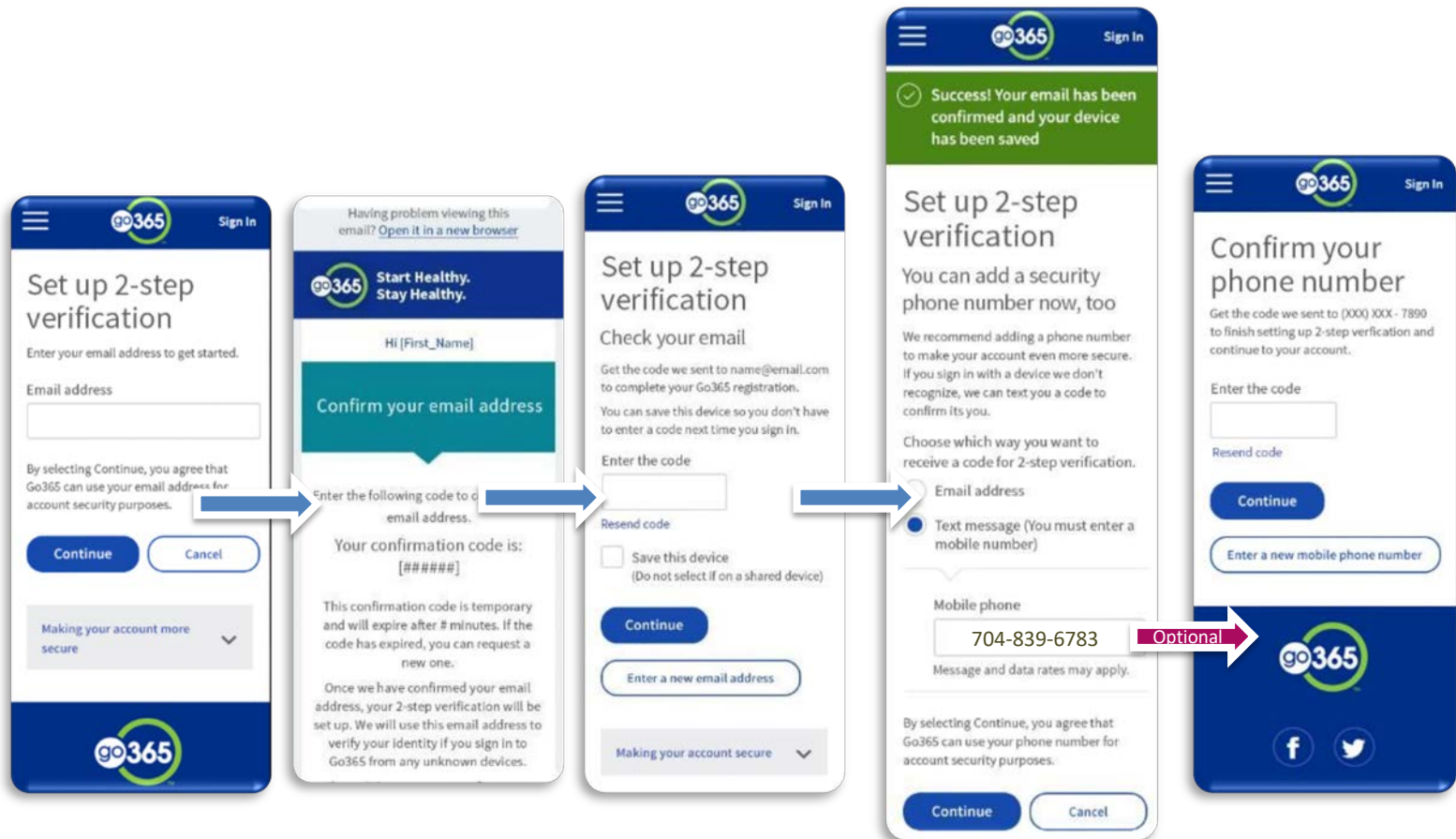
By selecting Submit, you agree that Go365[®] can use your email address or phone number for account security verification purposes.

- All fields are required
- Username requirements:
 - ✓ 6-15 characters (letters and/or numbers)
 - ✓ No spaces or special characters
 - ✓ Do not use your member ID or Social Security Number
- Password requirements:
 - ✓ Minimum of 8 to 15 characters
 - ✓ Must include at least one number and one letter
 - ✓ No special characters other than # * \$ or @
 - ✓ Case sensitive

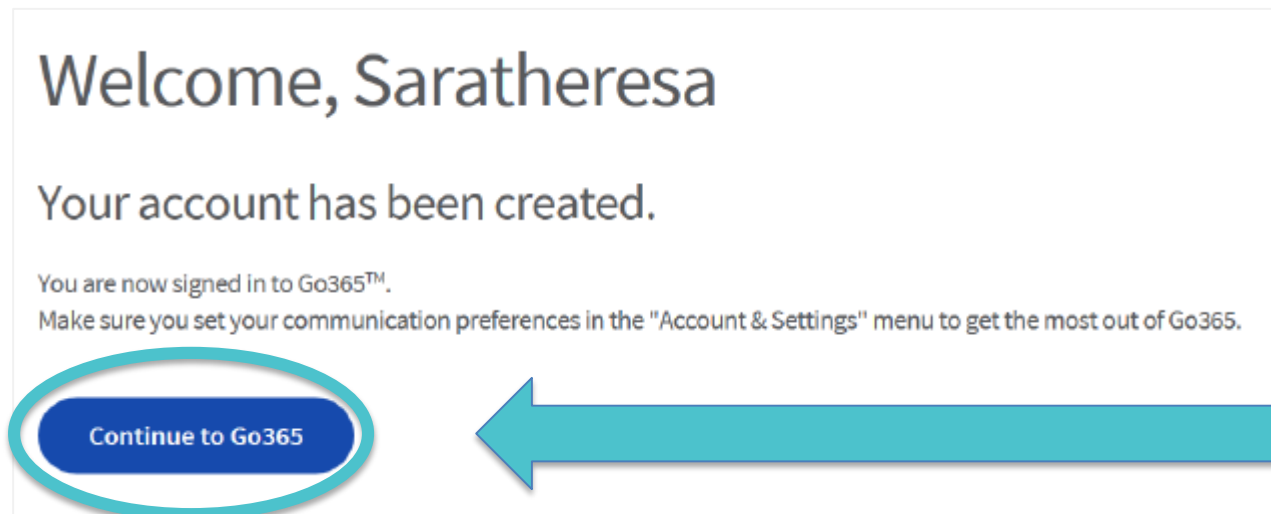
Keep your username and password in a safe place for future use!

2-step verification for your added security

You are required to verify the device you use to access Go365. If you use multiple devices to access Go365, you will go through this verification process for each device.



Congratulations! Registration is complete. Select “Continue to Go365” and get going on your personalized journey!



Note: before accessing Go365 online or through the App, you will need to accept the program terms and conditions by selecting “I agree.”