



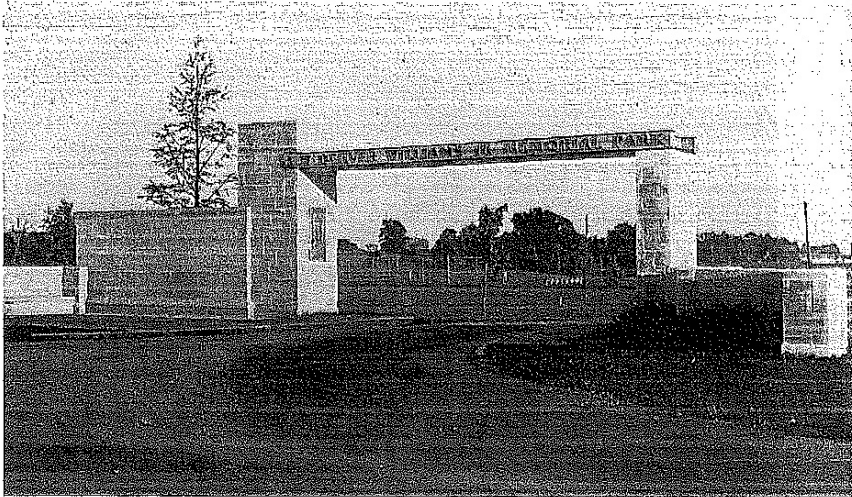
While we are young!

City of Wilmington Parks and Recreation
David Williams Memorial Park Completion Project

DEDICATION

OF

J. W. DENVER WILLIAMS, JR. MEMORIAL PARK



Rombach Avenue Entrance of Park

★ ★ ★

SUNDAY, OCTOBER 1, 1950

12 Noon to 4:30 P. M.

★ ★ ★

Dedication in Charge of Wilmington Civic and Patriotic
Organizations with Jack Patton as Chairman

The "Park" Story

On Sunday, October 1, 1950, J. W. Denver Williams, Jr. Memorial Park was dedicated, a culmination of three years of extensive fund-raising.

"Mrs. J. W. Denver Williams, Sr., her husband, who died May 21, 1949, and their younger son, David, offered the city an 18-acre tract between Rombach and Fife Avenues on August 28, 1947 as a memorial to their son and brother and all other Clinton County men who died in World War II."

Thus began the legacy of a community who built and developed parks to honor those who came before and to provide recreational opportunities for the entire community. Places that have been built and are now cared for under the current motto of

**"Your Community Parks –
Discover...Play...Celebrate".**

Fast forward to today and we now have a park system that has 9 properties, nearly 200 acres and includes a wide variety of sports amenities, playgrounds, recreational trails, conservation and picnicking areas.

The City of Wilmington Park Board is entrusted with the decision making for the City of Wilmington Parks and Recreation. Their responsibilities include oversight of personnel, maintenance and programming of facilities, as well as planning for the future of the park system. The mission is executed by the Parks and Recreation Director, Athletic Coordinator and Maintenance staff, along with dozens of volunteers.



Wilmington City Parks
♥ Volunteers
Call 937-382-4781



More about today...

Today, funding for the city parks is primarily through a 1.25 mills property tax levy for city property. Other funding sources include program fees, donations, and grants.

With the mission to continually improve the recreation experience for local citizens, the Park Board recently undertook an extensive community survey. The survey offered many insights, including that 86% of the 230+ responders believe that the most important service or function of the parks is to provide “safe play areas for children”.

Based on how future possibilities were ranked, a Splash Park and Skate Park are the opportunities the Park Board has chosen to pursue.



Why pursue these options?

- Expressed community desire for safe play areas.
- Strategically they fit the operating model of the parks to offer low maintenance, high value outdoor recreational opportunities (yes, as a community we would love to have a public pool or an indoor rec center, but those are simply not realistic at this time).
- We have a great location with existing parking and restrooms and an underutilized 1.3 acres.
- The City has an abundance of water.



How would the existing space be repurposed?

These artist renderings show how a Splash Park and Skate Park might look in the footprint of the Kroger/Clintmont baseball field.



There is really no denying that:

- Public play areas that serve all ages and ability levels are a great use of local resources.
- Encouraging residents to participate in fun, healthy, outdoor endeavors is important.
- Wilmington City Parks and Recreation has a history of successful projects and community support and is the right entity to undertake this type of endeavor.

Why invest in Parks?

- Parks are often viewed as an “indicator” of a community’s well-being. If we value parks, it indicates we value the people in our community, those who visit our community, those who are considering living, working or building a business here, and that we value the heritage that has been passed down to us.
- Parks build community, bringing people together, creating a “commons”; a gathering place, a place to honor heroes.
- Healthy, recreational pursuits promote wellness and a sense of community.
- Vibrant and appealing parks promote economic development by bringing in visitors.
- Parks provide educational settings for outdoor education and conservation.

Why partner on this project?

- The David Williams Memorial Park Project is an opportunity to provide recreational opportunities to the entire county that do not currently exist locally. Many supporters have written that these are activities that they regularly drive to Dayton and Cincinnati to enjoy.
- A skate park and splash park will serve the community for a long time – a true legacy project.
- This project has wide support from the community; demonstrated by the outpouring of support through surveying, social media, an online petition, letters, emails and public meetings.

What are the budget details?

The **total project** is estimated to be \$450,000 (with a stretch goal of \$550,000)

Proposed cost breakdown:

Design and Engineering - \$30,000

Splash Park Construction - \$170,000

Skate Park Construction - \$150,000

Stewardship Fund - \$50,000

Walkways, landscaping, site furnishings, electric, contingency - \$50,000

To-Date Funding Sources:

Land and Water Conservation Fund - \$150,000 (50% match required)

NatureWorks - \$26,932 (25% match required)

Clinton County Skatepark Association Pledge- \$15,000

Denver Park Fund - \$19,500

Park Improvement/Recreation Fund - \$9128

Clinton County Foundation - \$25,000; additional \$25,000 match pledge when \$425,000 is raised

HealthFirst for Clinton County Pledge - \$50,000

Clinton County Commissioners - \$63,233

Miscellaneous donations – \$5550

Donations restricted - \$2000 (trees)

Fund Raising Status as of January 28, 2016:

We still need to raise nearly \$60,000 to reach our goal of \$450,000 (\$160,000 to reach our stretch goal)

What commitments are needed?

Commitment from the Park Board. ✓

Commitment from City Council Park Committee. ✓

Commitment from the general public in the form of willing volunteers. ✓

Commitment from a wide variety of businesses, organizations and individuals in the form of financial assistance.

Please help us meet our goal “WHILE WE ARE YOUNG”!

Donors will be recognized at these levels with signage (*and we will shamelessly brag about you at every opportunity*).

\$150,000 +	<i>Legacy (Includes Naming Rights)</i>
\$100,000 - \$149,000	<i>Leader</i>
\$50,000 - \$99,000	<i>Builder</i>
\$25,000 - \$49,000	<i>Luminary</i>
\$10,000 - \$24,000	<i>Distinguished</i>
\$5000 - \$9999	<i>Benefactor</i>
\$1000 - \$4999	<i>Partner</i>
\$500 - \$999	<i>Sustainer</i>
\$100 - \$499	<i>Supporter</i>
Up to \$100	<i>Friend</i>

Donations made to public recreation are considered charitable gifts and are tax-deductible.

For more information on supporting the project, contact Lori Kersey Williams, City of Wilmington Parks and Recreation Director, at 382-4781 , lwilliams@ci.wilmington.oh.us, 69 N. South Street, Wilmington, OH 45177
Check us out on Facebook – ***Wilmington, OH Parks and Recreation*** and ***Skate Park/Splash Park Project- Wilmington, OH.***

“Your Community Parks – Discover...Play...Celebrate”















Timeline

Fundraise, fundraise, fundraise – now through January, 2017

Complete splash park design based on community input – April 2016

Complete skate park design based on community input – January 2017

Grand opening of splash park – summer of 2016

Grand opening of skatepark – 3Q of 2017